

ANNEX G: VILLAGE OF CORINTH

Jurisdiction Profile.....	2
Overview	2
Note to the Reviewer	2
Population and Demographics	3
Population Growth.....	4
Existing Land Use And Development Trends.....	4
Changes in Vulnerability.....	5
Future Development.....	6
Plan Maintenance.....	6
Public Participation	7
Hazard Profiles	8
Dam Failure.....	8
Drought.....	9
Earthquake	10
Extreme Cold.....	12
Extreme Heat	13
Flood	14
Hail	18
Hurricane / Tropical Storm	21
Ice Storm	23
Landslide.....	24
Lightning.....	25
Snow Storm.....	27
Tornado	28
Wildfire	30
Wind	34
Climate Change Considerations.....	37
Human-Caused Hazards.....	37
Previous Mitigation Actions.....	38
New Mitigation Actions.....	41
Capability Assessment.....	48

ANNEX G: VILLAGE OF CORINTH

The Saratoga County Hazard Mitigation Action Plan Update 2025 relates to the multiple jurisdictions therein from a county wide perspective. The shared plan includes the detailed hazard identification and risk assessment, a complete hazard event history, climate change trends and future impacts, location maps, extent tables and summary statements on both probability and potential severity. This annex is supplemental data provided specific to the municipality herein and focuses on the unique local risks and mitigation strategies.

JURISDICTION PROFILE

OVERVIEW

The Village of Corinth is located in Saratoga County, New York, with a population of 2,569. The Village of Corinth is on the banks of the upper Hudson, where the river cuts through solid rock to create the Palisades. According to the United States Census Bureau, the village has a total area of 1.1 square miles, of which 1.1 square miles is land and .04 square miles (3.6%) is water. The Village of Corinth is by the eastern town line of the Town of Corinth. The community asserts that it is the 'Snowshoe capital of the world.' Figure G-1 shows the general location of the Village of Corinth.

VILLAGE OF CORINTH CONTACT INFORMATION

Name: Terry Miller

Title: Mayor

Phone: (518) 654-2012

Address: 244 Main St., Corinth, NY 12822

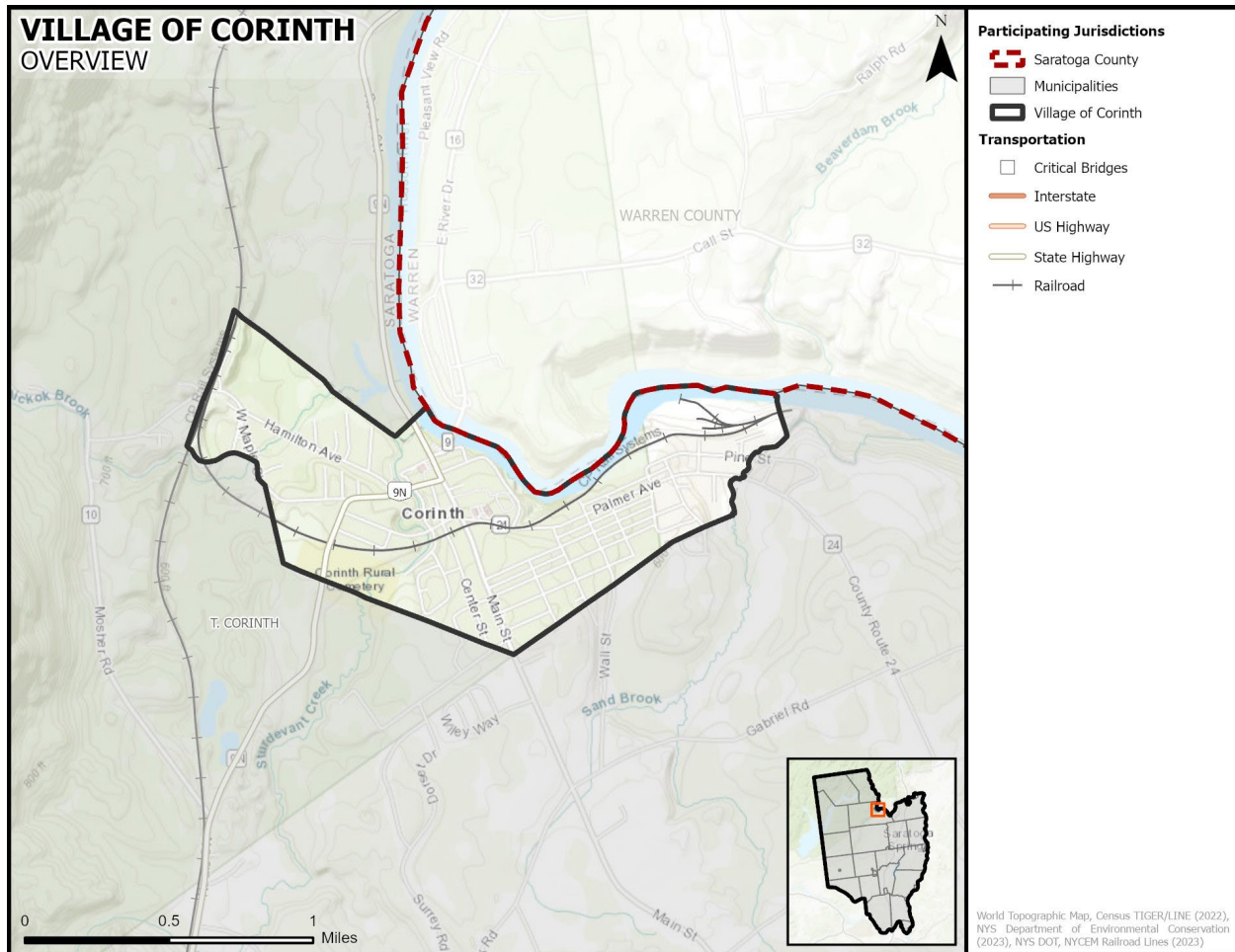
Email: mayor@villageofcorinthny.com

NOTE TO THE REVIEWER

It is noted that the Town of Corinth and the Village of Corinth are not listed separately in the National Centers for Environmental Information (NCEI). The NCEI is the most reliable source for historical storm event data. While the plan incorporates local and team input for historical events, for the purposes of this evaluation, both jurisdictions will be evaluated as equal entities with similar exposure and vulnerability due to their close proximity.

ANNEX G: VILLAGE OF CORINTH

Figure G-1. Village of Corinth Planning Area



POPULATION AND DEMOGRAPHICS

According to the 2020 Census population count, the Village of Corinth has an official population of 2,562 residents, a 0.1 percent increase since the 2010 census. Table G-1 shows the population distribution in the Village of Corinth in 2010, 2020 (Census population count), and 2022 (2022 American Community Survey (ACS) five-year estimates). Note that in some cases the 2022 ACS estimates may differ from the 2020 Census count; the ACS estimates are used throughout this section for consistency.¹

Table G-1. Population Distribution for the Village of Corinth

JURISDICTION	TOTAL 2010 POPULATION	TOTAL 2020 POPULATION (Census)	TOTAL 2022 POPULATION (ACS Estimates)	PERCENTAGE CHANGE 2010-2022
Village of Corinth	2,559	2,562	2,569	0%

¹ Source: <https://www.census.gov/geographies/reference-maps/2010/geo/2010-pumas/new-york.html>, <https://www.census.gov/en.html> and <https://www.census.gov/acs/www/data/data-tables-and-tools/data-profiles/2022/>

ANNEX G: VILLAGE OF CORINTH

Table G-2 summarizes select characteristics of vulnerable or sensitive populations in the Village of Corinth using data from the U.S. Census Bureau 2022 American Community Survey (ACS) five-year estimates.

Between official U.S. Census population counts, the estimate uses a formula based on new residential building permits and household size. It is simply an estimate and there are many variables involved in achieving an accurate estimation of people living in a given area at a given time.

Table G-2. Populations at Greater Risk for the Village of Corinth

JURISDICTION	65 AND OLDER	UNDER 5	WITH A DISABILITY	BELOW POVERTY LEVEL	LIMITED ENGLISH SPEAKING
Village of Corinth	476	181	424	373	58

POPULATION GROWTH

The official 2020 Village of Corinth population is 2,562. Overall, the Village of Corinth experienced a decrease in population between 1990 and 2020 of 7 percent, or a decrease of 198 residents. Between 2010 and 2020, the Village of Corinth experienced a population growth. Table G-3 provides historic change rates in the Village of Corinth.

Table G-3. Population Growth for the Village of Corinth, 1990-2020²

JURISDICTION	1990 ³	2000 ⁴	2010	2020	POP CHANGE 1990-2020	PERCENT OF CHANGE	POP CHANGE 2010-2020	PERCENT OF CHANGE
Village of Corinth	2,760	2,474	2,559	2,562	-198	7%	3	0%

EXISTING LAND USE AND DEVELOPMENT TRENDS

A review of building permits can also give a picture of the built environment and the number of buildings that are being constructed in the Village of Corinth. Table G-4 lists the number of residential buildings and total units authorized through a permit from the Village of Corinth, where data was available, between 2019 and 2023.

Table G-4. Building Permits for the Village of Corinth, 2019-2023⁵

JURISDICTION	2019		2020		2021		2022		2023	
	Total Buildings	Total Units	Total Buildings	Total Units	Total Buildings	Total Units	Total Buildings	Total Units	Total Buildings	Total Units
Village of Corinth	0	0	0	0	0	0	2	61	1	1

² U.S. Census Bureau

³ Source: <https://www2.census.gov/library/publications/decennial/1990/cp-1/cp-1-34-2.pdf?#>

⁴ Source: <https://www2.census.gov/library/publications/2001/compendia/ccdb00/2000ccdb.pdf>

⁵ U.S. Census Bureau, Building Permit Survey, 1992-2022, <https://www.census.gov/construction/bps/>

ANNEX G: VILLAGE OF CORINTH

Certain types of housing found in the Village of Corinth are more vulnerable than typical site-built, newly constructed residential structures. This includes mobile or manufactured homes, and single-family residences (SFR) that are built before 1980, as they are typically built to lower or less stringent construction standards than newer construction. Table G-5 includes housing inventory data for the Village of Corinth per the American Community Survey five-year estimates.

Table G-5. Housing Inventory and Vulnerable Structures, for the Village of Corinth⁶

JURISDICTION	TOTAL HOUSING UNITS	BUILT PRIOR TO 1980	MOBILE HOMES
Village of Corinth	1,230	938	10

CHANGES IN VULNERABILITY

The Village of Corinth has experienced a slight increase in overall population of 0.1 percent between 2010 and 2020. The American Community Survey estimates the 2022 total housing units for the Village of Corinth to be 1,230. The total building permits issued between 2019 and 2023 represent approximately 0.24 percent of the total housing units available in the Village of Corinth. With no significant change in population or housing units, there is no significant change in vulnerability to all hazards in terms of populations and the built environment.

Table G-6. Changes in Vulnerability, for the Village of Corinth

JURISDICTION	POPULATION TREND	HOUSING TREND	OVERALL VULNERABILITY CHANGES
Village of Corinth	No Change	Stagnant	No Change

Table G-7 lists the total number of building permits issued in the Village of Corinth from 2019 through 2023, including the number of permits issued in the Special Flood Hazard Area and the percentage of SFHA permits issued overall.

Table G-7. Building Permits, Village of Corinth, 2019-2023

JURISDICTION	TOTAL BUILDING PERMITS	SFHA PERMITS	PERCENT OF PERMITS IN SFHA
Village of Corinth	3	0	0

No permits were issued in the SFHA during that same time period, indicating no increase in flood risk due to new development.

Changes in vulnerability are applicable to all natural hazards except when discussing dam failure as vulnerability for this hazard is discussed in relation to changes in the estimated inundation areas for profiled dams. The Village of Corinth does not own any dams and is not located in any estimated dam inundation areas, therefore changes in vulnerability in the estimated inundation areas for profiled dams does not pertain to the Village of Corinth. While flood and wildfire hazards

⁶ The Housing Inventory and Vulnerable Structures are based off the 2022 American Community Survey 5-Year Estimates Data Profiles.

ANNEX G: VILLAGE OF CORINTH

feature geographical boundaries, increases in population and building inventory can increase overall vulnerability for these hazards even when the trends occur outside of the known hazard boundary. Development decreases permeable surface areas and increases runoff, increasing flood risk. As population density increases, the Wildland Urban Interface (WUI) typically increases. WUI growth often results in more wildfire ignitions, which puts more houses and lives at risk.

FUTURE DEVELOPMENT

To better understand how future growth and development in the Village of Corinth might affect hazard vulnerability, it is useful to consider population growth, occupied and vacant land, the potential for future development in hazard areas, and current planning and growth management efforts. This section includes an analysis of the projected population change, and economic impacts.

Population projections from 2010 to 2040 are listed in Table G-8, as provided Cornell University's Program on Applied Demographics⁷. **This information is only available at the County level;** however, the population projection shows an increase in population density for the County, which would mean an overall increase for the planning area.

Table G-8. Saratoga County Population Projections

LAND AREA (square miles)	2010		2020		2030		2040	
	Population							
	Total Number	Density (Land Area, sq. miles)	Total Number	Density (Land Area, sq. miles)	Total Number	Density (Land Area, sq. miles)	Total Number	Density (Land Area, sq. miles)
810	219,607	271.12	234,009	288.90	246,743	304.62	252,521	311.75

PLAN MAINTENANCE

The Saratoga County Hazard Mitigation Plan Update provides explanation on how each participating jurisdiction will be involved in implementing, evaluating, and enhancing the Plan over time. Please see Section 24 of this Plan for additional information regarding plan maintenance for the entire planning area.

Periodic revisions of the Plan are required to ensure that goals, objectives, and mitigation actions are kept current. When the plan is discussed in these sections it includes the risk assessment and mitigation actions as a part of the monitoring, evaluating, updating and review process. Revisions may be required to ensure the Plan remains in compliance with federal and state statutes and regulations. Table G-9 indicates the department and title of the party responsible for Plan monitoring, evaluating, updating, and review of the Plan.

Table G-9. Team Member Responsible for Plan Monitoring, Evaluating, Updating, and Review of the Plan

JURISDICTION	TITLE
Village of Corinth	Mayor

⁷ Source: <https://pad.human.cornell.edu/counties/projections.cfm>

ANNEX G: VILLAGE OF CORINTH

PUBLIC PARTICIPATION

A series of public meetings were held throughout the Saratoga County planning area to collect public and stakeholder input. Topics of discussion included the purpose of hazard mitigation, discussion of the planning process, and types of natural hazards. In addition, a public survey was developed to solicit public input during the planning process from citizens and stakeholders and to obtain data regarding the identification of any potential hazard mitigation actions or problem areas. The survey was promoted by local officials and a link to the survey was posted on the Village of Corinth's website. No surveys were completed for the Village of Corinth. Additional meeting documentation and survey results can be viewed in Appendix E and Appendix B, respectively.

The draft Plan was made available to the general public for review and comment on Saratoga County's website for 30 days. To ensure opportunities are given to all citizens including those without internet access, a paper copy of the draft plan annexes was also available at municipal offices and public library locations with a comment form that included an email and phone number for the public to provide feedback. Refer to Section 2 for additional information on public involvement in the planning process.

Public input was an integral part of the preparation of this Plan and will continue to be essential for Plan updates. The public will be directly involved in the annual evaluation, monitoring, reviews and cyclical updates. Changes or suggestions to improve or update the Plan will provide opportunities for additional public input. The public can review the Plan on the Village of Corinth's website, where officials and the public are invited to provide ongoing feedback, via email.

The Planning Team is responsible for notifying stakeholders and community members on an annual basis and maintaining the Plan. Media, including local newspaper and radio stations, will be used to notify the public of any maintenance or periodic review activities during the implementation, monitoring, and evaluation phases. Additionally, local news media will be contacted to cover information regarding Plan updates, status of grant applications, and project implementation. Local and social media outlets, such as Facebook and Instagram, will keep the public and stakeholders apprised of potential opportunities to fund and implement mitigation projects identified in the Plan.

ANNEX G: VILLAGE OF CORINTH

HAZARD PROFILES

DAM FAILURE

The Village of Corinth is not profiling dam failure. The community does not own any dams and is not located in any estimated dam inundation zones. Dam failure has not impacted the community in the past and is not anticipated to impact the community in the future. Any localized flooding the community may experience due to a dam breach is addressed in the flood hazard profile. Therefore, this hazard does not require further analysis.

ANNEX G: VILLAGE OF CORINTH

DROUGHT

HAZARD DESCRIPTION, LOCATION, EXTENT, & HISTORICAL OCCURRENCES

The Saratoga County Hazard Mitigation Plan Update provides a hazard description, location, and extent of the drought hazard for each participating jurisdiction (Section 6). Drought conditions are not confined to specific geographic boundaries and are considered similar for all participating jurisdictions throughout the planning area. Historical drought data for the County, including the Village of Corinth, are provided on a County-wide basis per the NCEI database. Therefore, all historical events are listed in Section 6 of the Plan Update.

PROBABILITY OF FUTURE EVENTS

According to historical records for the Saratoga County planning area, the Village of Corinth can expect to experience a drought event approximately once every one to two years. This frequency supports a “Highly Likely” probability of future events.

VULNERABILITY AND IMPACT

While the entirety of the Saratoga County planning area, including the Village of Corinth, is exposed to drought events, existing buildings, infrastructure, and critical facilities are not likely to sustain significant damage from these events. However, drought impacts are mostly experienced in water shortages, breaks in water lines, or crop and livestock losses on agricultural lands and typically have minimal impact on buildings.

The Village of Corinth planning team members identified critical facilities as assets that are considered the most important to the planning area and are susceptible to a range of potential hazard impacts caused by drought events. Drought impacts to critical facilities are similar across the entire planning area and are listed in detail in the drought hazard profile (Section 6). The following critical facilities would be vulnerable to drought events in the Village of Corinth:

Table G-10. Critical Facilities at Risk

JURISDICTION	CRITICAL FACILITIES
Village of Corinth	2 Municipal Facilities, 3 Sewage and Water Facilities

The population over 65 in the Village of Corinth is estimated at 18.5 percent of the City’s total population and children under the age of 5 are estimated at 7.0 percent. The population with a disability is estimated at 16.5 percent of the City’s total population. An estimated 14.5 percent of the Village of Corinth’s population live below the poverty level and 2.3 percent of the populations speak a language other than English (Table G-11).

Table G-11. Populations at Greater Risk

JURISDICTION	65 AND OLDER	UNDER 5	WITH A DISABILITY	BELOW POVERTY LEVEL	LIMITED ENGLISH SPEAKING
Village of Corinth	476	181	424	373	58

Historic losses are reported on a county-wide basis. Please see Section 6 of this Plan for additional information on historical and annualized losses for the entire planning area.

ANNEX G: VILLAGE OF CORINTH

EARTHQUAKE

HAZARD DESCRIPTION, LOCATION, EXTENT, & HISTORICAL OCCURRENCES

The Saratoga County Hazard Mitigation Plan Update provides a hazard description, location, and extent of the earthquake hazard for each participating jurisdiction (Section 7). The concentration of earthquakes in New York State is located in three general regions. The Saratoga Planning area is located in one of these general regions that includes the northeast third of the State. There is no geographic boundary to the hazard within the planning area therefore the risk is considered similar for all participating jurisdictions throughout Saratoga County. Historical earthquake data for the County, including the Village of Corinth, are provided on a County-wide basis per the USGS database. Therefore, all historical events are listed in Section 7 of the Plan Update.

PROBABILITY OF FUTURE EVENTS

According to the USGS, the entire Saratoga County planning area, including Village of Corinth, has a five to twenty-five percent chance of a slightly damaging (or greater) earthquake within 100 years. Based on historical records, the probability of an earthquake affecting the planning area is “Unlikely,” meaning that an event is probable in the next 10 years.

VULNERABILITY AND IMPACT

While the entirety of the Saratoga County planning area, including the Village of Corinth, is exposed to earthquake events, damaging earthquakes for the planning area are exceedingly rare. With no significant historical events recorded, neither annualized loss-estimates or a breakdown of potential dollar losses of critical facilities and infrastructure from earthquakes are available. According to the New York State Hazard Mitigation Plan there have been no known impacts to structures or infrastructure in the area due to earthquakes.

The lack of historical events or impacts supports a “Limited” severity of impact meaning injuries and/or illnesses are treatable with first aid, shutdown of facilities and services for 24 hours or less, and less than 10 percent of property is destroyed or with major damage.

The Village of Corinth planning team members identified critical facilities as assets that are considered the most important to the planning area and are susceptible to a range of potential hazard impacts caused by earthquake events. Earthquake impacts to critical facilities are similar across the entire planning area and are listed in detail in the earthquake hazard profile (Section 7). The following critical facilities would be vulnerable to earthquake events in the Village of Corinth:

Table G-12. Critical Facilities at Risk

JURISDICTION	CRITICAL FACILITIES
Village of Corinth	2 Municipal Facilities, 3 Sewage and Water Facilities

The population over 65 in the Village of Corinth is estimated at 18.5 percent of the City’s total population and children under the age of 5 are estimated at 7.0 percent. The population with a disability is estimated at 16.5 percent of the City’s total population. An estimated 14.5 percent of the Village of Corinth’s population live below the poverty level and 2.3 percent of the populations speak a language other than English (Table G-13).

ANNEX G: VILLAGE OF CORINTH

Table G-13. Populations at Greater Risk

JURISDICTION	65 AND OLDER	UNDER 5	WITH A DISABILITY	BELOW POVERTY LEVEL	LIMITED ENGLISH SPEAKING
Village of Corinth	476	181	424	373	58

Historic losses are reported on a county-wide basis. Please see Section 7 of this Plan for additional information on historical and annualized losses for the entire planning area.

ANNEX G: VILLAGE OF CORINTH

EXTREME COLD

HAZARD DESCRIPTION, LOCATION, EXTENT, & HISTORICAL OCCURRENCES

The Saratoga County Hazard Mitigation Plan Update provides a hazard description, location, and extent of the extreme cold hazard for each participating jurisdiction (Section 8). Extreme cold events are not confined to specific geographic boundaries and are considered similar for all participating jurisdictions throughout the planning area. For the purposes of evaluating this hazard, the following NCEI reporting categories are included under extreme cold: cold/wind chill, extreme cold, and frost/freeze. Historical extreme cold data for the County, including the Village of Corinth, are provided on a county-wide basis per the NCEI database. Therefore, all historical events are listed in Section 8 of the Plan Update.

PROBABILITY OF FUTURE EVENTS

According to historical records for the Saratoga County planning area, the Village of Corinth can expect to experience approximately three to four extreme cold events each year. This frequency supports a “Highly Likely” probability of future events.

VULNERABILITY AND IMPACT

While the entirety of the Saratoga County planning area, including the Village of Corinth, is exposed to extreme cold events, existing buildings, infrastructure, and critical facilities are not likely to sustain significant damage from these events. However, the Village of Corinth planning team members identified the following critical facilities (Table G-14) as assets that are considered the most important to the planning area. These facilities are susceptible to a range of impacts caused by this hazard. Extreme cold impacts to critical facilities are similar across the entire planning area and are listed in detail in the extreme cold hazard profile (Section 8). The following critical facilities would be vulnerable to extreme cold events in the Village of Corinth:

Table G-14. Critical Facilities at Risk

JURISDICTION	CRITICAL FACILITIES
Village of Corinth	2 Municipal Facilities, 3 Sewage and Water Facilities

The population over 65 in the Village of Corinth is estimated at 18.5 percent of the City’s total population and children under the age of 5 are estimated at 7.0 percent. The population with a disability is estimated at 16.5 percent of the City’s total population. An estimated 14.5 percent of the Village of Corinth’s population live below the poverty level and 2.3 percent of the populations speak a language other than English (Table G-15).

Table G-15. Populations at Greater Risk

JURISDICTION	65 AND OLDER	UNDER 5	WITH A DISABILITY	BELOW POVERTY LEVEL	LIMITED ENGLISH SPEAKING
Village of Corinth	476	181	424	373	58

Historic losses are reported on a county-wide basis. Please see Section 8 of this Plan for additional information on historical and annualized losses for the entire planning area.

ANNEX G: VILLAGE OF CORINTH

EXTREME HEAT

HAZARD DESCRIPTION, LOCATION, EXTENT, & HISTORICAL OCCURRENCES

The Saratoga County Hazard Mitigation Plan Update provides a hazard description, location, and extent of the extreme heat hazard for each participating jurisdiction (Section 9). Extreme heat events are not confined to specific geographic boundaries and are considered similar for all participating jurisdictions throughout the planning area. Historical extreme heat data for the County, including the Village of Corinth, are provided on a County-wide basis per the NCEI database. Therefore, all historical events are listed in Section 9 of the Plan Update.

PROBABILITY OF FUTURE EVENTS

According to historical records for the Saratoga County planning area, the Village of Corinth can expect to experience an extreme heat event approximately once every year. This frequency supports a “Highly Likely” probability of future events.

VULNERABILITY AND IMPACT

While the entirety of the Saratoga County planning area, including the Village of Corinth, is exposed to extreme heat events, existing buildings, infrastructure, and critical facilities are not likely to sustain significant damage from these events. However, the Village of Corinth planning team members identified the following critical facilities (Table G-16) as assets that are considered the most important to the planning area. These facilities are susceptible to a range of impacts caused by this hazard. Extreme heat impacts to critical facilities are similar across the entire planning area and are listed in detail in the extreme heat hazard profile (Section 9). The following critical facilities would be vulnerable to extreme heat events in the Village of Corinth:

Table G-16. Critical Facilities at Risk

JURISDICTION	CRITICAL FACILITIES
Village of Corinth	2 Municipal Facilities, 3 Sewage and Water Facilities

The population over 65 in the Village of Corinth is estimated at 18.5 percent of the City’s total population and children under the age of 5 are estimated at 7.0 percent. The population with a disability is estimated at 16.5 percent of the City’s total population. An estimated 14.5 percent of the Village of Corinth’s population live below the poverty level and 2.3 percent of the populations speak a language other than English (Table G-17).

Table G-17. Populations at Greater Risk

JURISDICTION	65 AND OLDER	UNDER 5	WITH A DISABILITY	BELOW POVERTY LEVEL	LIMITED ENGLISH SPEAKING
Village of Corinth	476	181	424	373	58

Historic losses are reported on a county-wide basis. Please see Section 9 of this Plan for additional information on historical and annualized losses for the entire planning area.

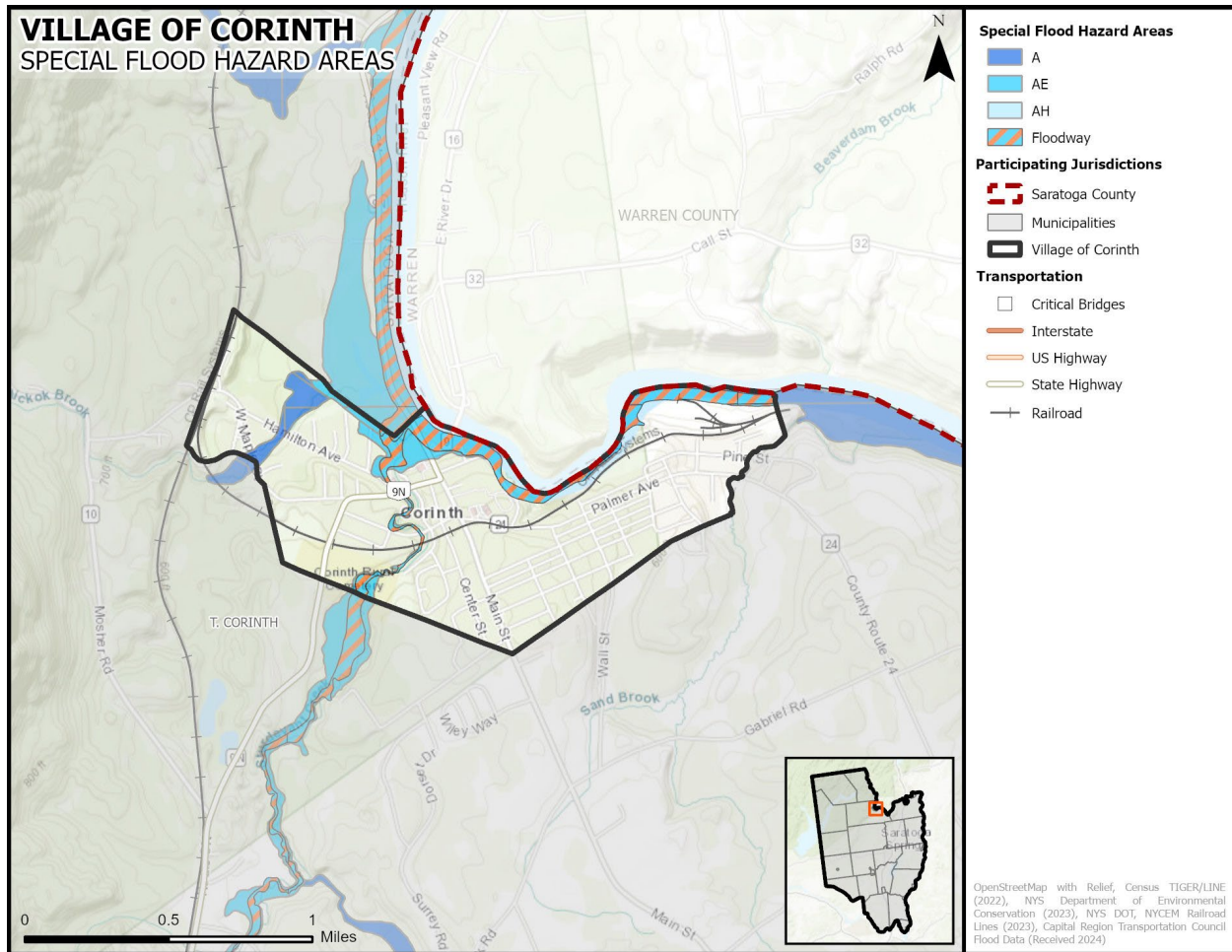
ANNEX G: VILLAGE OF CORINTH

FLOOD

HAZARD DESCRIPTION, LOCATION, & EXTENT

The Saratoga County Hazard Mitigation Plan Update provides a hazard description and extent of the flood hazard for the entire Saratoga County planning area in Section 10. Full flood zone delineations are available in the Village of Corinth including some areas with base flood elevations. The location of estimated flood zones for the Village of Corinth, based on data provided by the Capital Region Transportation Council, is provided in Figure G-2. FEMA's regulatory flood insurance rate maps are available for all jurisdictions in Appendix H.

Figure G-2. Estimated Flood Zones in the Village of Corinth



HISTORICAL OCCURRENCES

Table G-18 provides the historical occurrences of flood events for the Village of Corinth according to the National Oceanic and Atmospheric Administration (NOAA) Storm Prediction Center, National Centers for Environmental Information (NCEI) database for Saratoga County. From January 1996 through June 2024, two flood events were known to have impacted the Village of Corinth, based upon NCEI records. Flood events are often reported on a county-wide basis, or under-reported for individual municipalities, particularly in smaller communities.

ANNEX G: VILLAGE OF CORINTH

Table G-18. Historical Flood Events, 1996-2024

JURISDICTION	DATE	DEATHS	INJURIES	PROPERTY DAMAGE	CROP DAMAGE
Village of Corinth	10/1/2010	0	0	\$0	\$0
	12/18/2023	0	0	\$2,000	\$0
Totals		0	0	\$2,000	

Based on the list of historical flood events for the Village of Corinth, one reported event has occurred since the 2019 Plan.

PROBABILITY OF FUTURE EVENTS

While some incidents may be reported at the local municipal level, as indicated above, County level events provide a more robust risk assessment for each participating jurisdiction. According to historical records for the Saratoga County planning area, the Village of Corinth can expect to experience approximately five flood events every year. This frequency supports a “Highly Likely” probability of future events.

VULNERABILITY AND IMPACT

The Village of Corinth planning team members identified critical facilities as assets that are considered the most important to the planning area and are susceptible to a range of potential impacts from a variety of natural hazards, including those facilities located in the regulatory floodplain. Table G-19 includes the critical facilities in the Village of Corinth located in the floodplain. Impacts to critical facilities located in the floodplain are listed in detail in flood hazard profile (Section 10).

Table G-19. Critical Facilities in the Floodplain

JURISDICTION	CRITICAL FACILITY	FACILITY TYPE	FLOODPLAIN (1% or 0.2%)
Village of Corinth	Corinth Village Wastewater Treatment Plant	Sewage and Water	1%
	Corinth Village Well Pumphouse	Sewage and Water	1%

Historic loss estimates due to flood are presented in Table G-20 below.

Table G-20. Potential Annualized Losses, 1996-2024⁸

JURISDICTION	NUMBER OF EVENTS	PROPERTY & CROP LOSS	ANNUAL LOSS ESTIMATES
Village of Corinth	2	\$2,000	\$100

While all citizens are at risk of the impacts of a flood, forced relocation and disaster recovery drastically impacts low-income residents who lack the financial means to travel, afford a long-term stay away from home, and to rebuild or repair their homes. The population over 65 in the Village of Corinth is estimated at 18.5 percent of the City’s total population and children under the age of 5 are estimated at 7.0 percent. The population with a disability is estimated at 16.5 percent of the

⁸ Historical events are reported from 1996 through 2023; values are in 2024 dollars.

ANNEX G: VILLAGE OF CORINTH

City’s total population. An estimated 14.5 percent of the Village of Corinth’s population live below the poverty level and 2.3 percent of the populations speak a language other than English (Table G-21).

Table G-21. Populations at Greater Risk

JURISDICTION	65 AND OLDER	UNDER 5	WITH A DISABILITY	BELOW POVERTY LEVEL	LIMITED ENGLISH SPEAKING
Village of Corinth	476	181	424	373	58

The severity of a flooding event varies depending on the relative risk to citizens and structures located within each jurisdiction. Table G-22 depicts the level of impact for the Village of Corinth.

Table G-22. Village of Corinth Impact

JURISDICTION	IMPACT	DESCRIPTION
Village of Corinth	Limited	The Village of Corinth could have limited property damage with critical facilities typically shut down for 24 hours or less, and less than 10 percent of property would be destroyed or damaged.

NATIONAL FLOOD INSURANCE PROGRAM (NFIP) PARTICIPATION

The Village of Corinth currently participates in the National Flood Insurance Program and is in good standing. The community has adopted a flood damage prevention ordinance that includes the minimum requirements for development in special flood hazard areas.

NFIP COMPLIANCE AND MAINTENANCE

The Village of Corinth has developed mitigation actions that relate to NFIP participation, maintenance or compliance. Compliance and maintenance actions can be found in Section 23. Flooding was identified by the Village of Corinth as a high-risk hazard during hazard ranking activities at the Risk Assessment Workshop. Many of the mitigation actions for the jurisdiction were developed with flood mitigation in mind.

The Village of Corinth Building Inspector is designated as the local floodplain administrator and is responsible for maintaining compliance in the NFIP through development regulations as outlines in the community flood damage prevention ordinance (Table G-23). The local flood damage prevention ordinance is available for review at the local floodplain administrator’s office. In addition, the ordinance can be viewed using the link provided below (Table G-23).

Table G-23. Flood Damage Prevention Ordinance

JURISDICTION	FLOOD DAMAGE PREVENTION ORDINANCE
Village of Corinth	https://ecode360.com/26962023#26962023

The floodplain administrator is responsible for

- Permitting and inspecting construction activity in the floodplain
- Ensuring conformance with floodplain permit requirements
- Enforcing floodplain regulations

ANNEX G: VILLAGE OF CORINTH

- Identifying Substantially Damaged structures and ensuring compliance during reconstruction
- Identifying Substantial Improvements in proposed development permit applications and ensuring compliance during construction
- Providing floodplain map and flood insurance information to the public
- Coordinating with FEMA to maintain the community's participation in the NFIP
- Keeping records of construction in the floodplain

Table G-24 provides the most recent Community Assistance Visits (CAV) and Community Assistance Calls (CAC) dates along with the current status for the jurisdiction.

Table G-24. Compliance History

JURISDICTION	DATE OF LAST CAV	DATE OF LAST CAC	CURRENT NFIP STATUS	POLICIES IN FORCE
Village of Corinth	4/16/2021	10/02/2013	Good Standing	2

REPETITIVE LOSS

The Village of Corinth currently has no repetitive loss or severe repetitive loss properties.

ANNEX G: VILLAGE OF CORINTH

HAIL

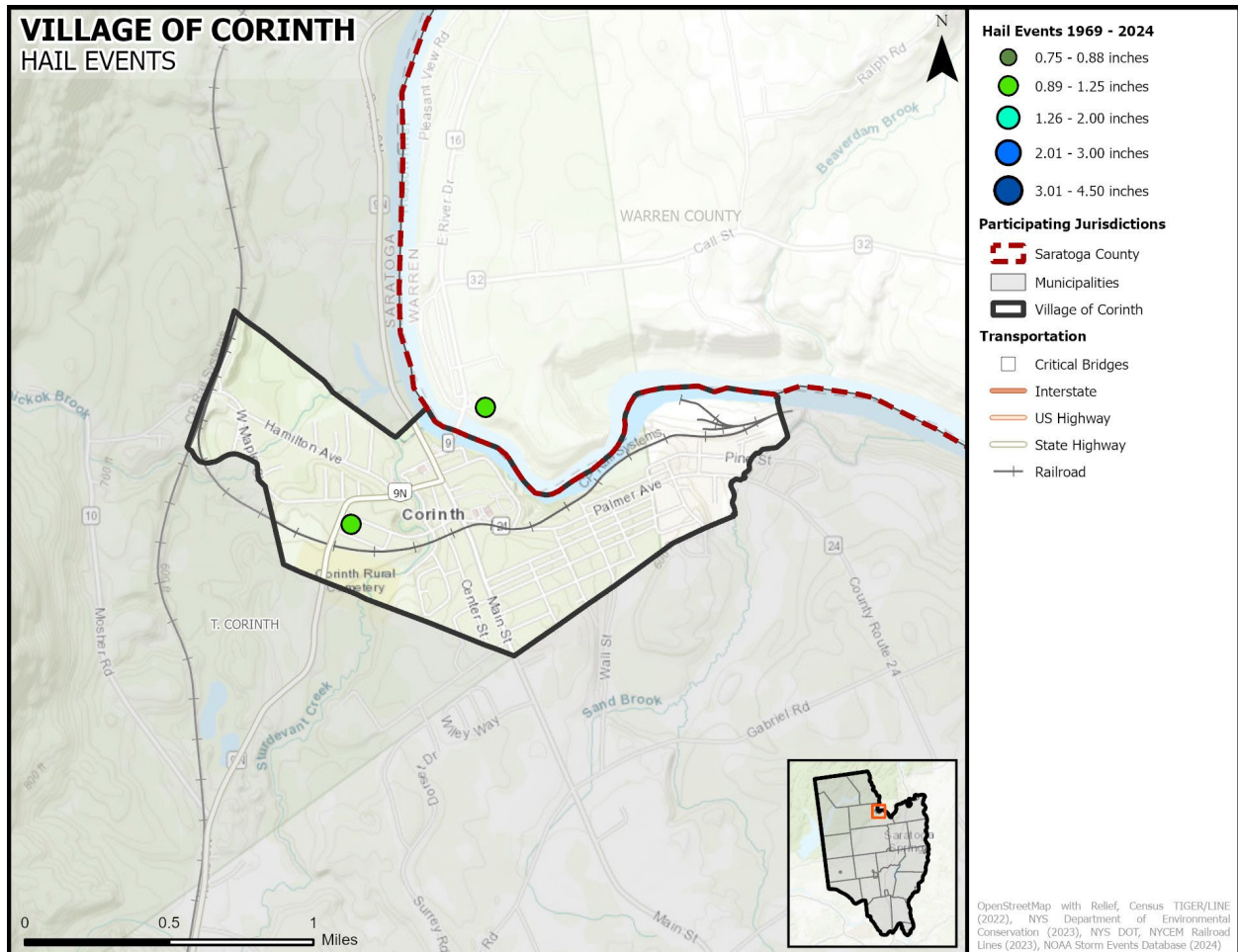
HAZARD DESCRIPTION, LOCATION, & EXTENT

The Saratoga County Hazard Mitigation Plan Update provides a hazard description, location and extent of the hail hazard for each participating jurisdiction (Section 11). Hail events are not confined to specific geographic boundaries and are considered similar for all participating jurisdictions throughout the planning area.

HISTORICAL OCCURRENCES

Historical evidence shown in Figure G-3 demonstrates that the Village of Corinth is vulnerable to hail events overall. Historical events are shown in Table G-25. A total of two reported historical hail events impacted the Village of Corinth from January 1969 through June 2024; these events were reported to NCEI and NOAA databases and may not represent all hail events to have occurred during the past 55.5 years. Only those events for the Village of Corinth with latitude and longitude available were plotted (Figure G-3).

Figure G-3. Historical Hail Events, 1969-2024



ANNEX G: VILLAGE OF CORINTH

Table G-25. Historical Hail Events, 1969-2024⁹

JURISDICTION	DATE	MAGNITUDE (inches)	DEATHS	INJURIES	PROPERTY DAMAGE	CROP DAMAGE
Village of Corinth	6/15/2009	1	0	0	\$0	\$0
	6/6/2023	1	0	0	\$0	\$0
TOTALS		(Max Extent)	0	0	\$0	\$0

Based on the list of historical hail events for the Village of Corinth, one reported event has occurred since the 2019 Plan.

PROBABILITY OF FUTURE EVENTS

Historical hail events are reported on a county-wide basis. While some incidents may be reported at the local municipal level, as indicated above, county level events provide a more robust risk assessment for each participating jurisdiction. According to historical records for the Saratoga County planning area, the Village of Corinth can expect a hail event approximately three to four events every year. This frequency supports a “Highly Likely” probability of future events.

VULNERABILITY AND IMPACT

The Village of Corinth planning team members identified the following critical facilities as assets that are considered the most important to the planning area. These facilities are susceptible to a range of impacts caused by hailstorm events. Hail impacts to critical facilities are similar across the entire planning area and are listed in detail in the hail hazard profile (Section 11).

Table G-26. Critical Facilities at Risk

JURISDICTION	CRITICAL FACILITIES
Village of Corinth	2 Municipal Facilities, 3 Sewage and Water Facilities

The U.S. Census data indicates a total of 10 (1 percent of total housing stock) manufactured homes located in the Village of Corinth. In addition, 76 percent (approximately 938 structures) of the housing structures in the Village of Corinth were built before 1980. These structures would typically be built to lower or less stringent construction standards than newer construction and may be more susceptible to damages during significant hail events.

Table G-27. Structures at Greater Risk

JURISDICTION	MANUFACTURED HOMES	SFRR STRUCTURES BUILT BEFORE 1980
Village of Corinth	10	938

While all citizens are at risk of the impacts of hail, forced relocation and disaster recovery drastically impacts low-income residents who lack the financial means to travel, afford a long-term stay away from home, and to rebuild or repair their homes. The population over 65 in the Village of Corinth is estimated at 18.5 percent of the City’s total population and children under the age of 5 are estimated at 7.0 percent. The population with a disability is estimated at 16.5 percent of the City’s total population. An estimated 14.5 percent of the Village of Corinth’s population live below

⁹ Historical events are reported from 1969 through 2024; values are in 2024 dollars.

ANNEX G: VILLAGE OF CORINTH

the poverty level and 2.3 percent of the populations speak a language other than English (Table G-28).

Table G-28. Populations at Greater Risk

JURISDICTION	65 AND OLDER	UNDER 5	WITH A DISABILITY	BELOW POVERTY LEVEL	LIMITED ENGLISH SPEAKING
Village of Corinth	476	181	424	373	58

Overall, the average loss estimate of property and crops in the Village of Corinth is \$0 with an average annualized loss of \$0. Based on historic loss and damages, the impact of hail damages on the Village of Corinth can be considered “Limited” severity of impact, meaning minor quality of life lost, critical facilities and services shut down for 24 hours or less, and less than 10 percent of property destroyed or with major damage.

Table G-29. Estimated Annualized Losses

JURISDICTION	TOTAL PROPERTY & CROP LOSS	ANNUAL LOSS ESTIMATE
Village of Corinth	\$0	\$0

ANNEX G: VILLAGE OF CORINTH

HURRICANE / TROPICAL STORM

HAZARD DESCRIPTION, LOCATION, EXTENT, & HISTORICAL OCCURRENCES

The Saratoga County Hazard Mitigation Plan Update provides a hazard description, location, and extent of the hurricane/tropical storm hazard for each participating jurisdiction (Section 12). The location of the Saratoga County planning area is approximately 170 miles from the coast making the planning area, including Village of Corinth, vulnerable to threats directly and indirectly related to a hurricane event, such as high-force winds and flooding. There is no geographic boundary to the hazard therefore the risk is considered similar for all participating jurisdictions throughout Saratoga County, including the Village of Corinth. Historical hurricane data for the planning area, including the Village of Corinth, are provided on a regional basis per the NCEI database. Therefore, all historical events are listed in Section 12 of the Plan Update.

PROBABILITY OF FUTURE EVENTS

According to NOAA Historical Hurricane Tracks there have been six hurricanes or tropical storms track across or near the planning area between January 1996 and June 2024. The probability of a hurricane or tropical storm affecting the planning area is considered “Occasional”, meaning that an event is probable in the next five years.

VULNERABILITY AND IMPACT

Hurricane and tropical storm events can cause major damage to large areas; hence, all existing buildings, facilities, and populations are equally exposed and vulnerable to this hazard and could potentially be impacted. The lack of historical impacts to the entire Saratoga County planning area supports a “Limited” severity of impact meaning injuries and/or illnesses are treatable with first aid, shutdown of facilities and services for 24 hours or less, and less than ten percent of property is destroyed or with major damage.

The Village of Corinth planning team members identified the following critical facilities as assets that are considered the most important to the planning area. These facilities are susceptible to a range of impacts caused by hurricane events. Hurricane impacts to critical facilities are similar across the entire planning area and are listed in detail in the hurricane hazard profile (Section 12). The following critical facilities would be vulnerable to earthquake events in the Village of Corinth:

Table G-30. Critical Facilities at Risk

JURISDICTION	CRITICAL FACILITIES
Village of Corinth	2 Municipal Facilities, 3 Sewage and Water Facilities

The population over 65 in the Village of Corinth is estimated at 18.5 percent of the City’s total population and children under the age of 5 are estimated at 7.0 percent. The population with a disability is estimated at 16.5 percent of the City’s total population. An estimated 14.5 percent of the Village of Corinth’s population live below the poverty level and 2.3 percent of the populations speak a language other than English (Table G-31).

Table G-31. Populations at Greater Risk

JURISDICTION	65 AND OLDER	UNDER 5	WITH A DISABILITY	BELOW POVERTY LEVEL	LIMITED ENGLISH SPEAKING
Village of Corinth	476	181	424	373	58

ANNEX G: VILLAGE OF CORINTH

Historic losses are typically reported on a county-wide basis. Please see Section 12 of this Plan for additional information on historical and annualized losses for the entire planning area.

ANNEX G: VILLAGE OF CORINTH

ICE STORM

HAZARD DESCRIPTION, LOCATION, EXTENT, & HISTORICAL OCCURRENCES

The Saratoga County Hazard Mitigation Plan Update provides a hazard description, location, and extent of the ice storm hazard for each participating jurisdiction (Section 13). Ice storm events are not confined to specific geographic boundaries and are considered similar for all participating jurisdictions throughout the planning area. For the purposes of evaluating this hazard, the following NCEI reporting categories are included under ice storm: sleet, freezing fog, and ice storm. Historical ice storm data for the county, including the Village of Corinth, are provided on a county-wide basis per the NCEI database. Therefore, all historical events are listed in Section 13 of the Plan Update.

PROBABILITY OF FUTURE EVENTS

According to historical records for the Saratoga County planning area, the Village of Corinth can expect to experience an ice storm event approximately every five years. This frequency supports a “Occasional” probability of future events.

VULNERABILITY AND IMPACT

While the entirety of the Saratoga County planning area, including the Village of Corinth, is exposed to ice storm events, existing buildings, infrastructure, and critical facilities are not likely to sustain significant damage from these events. However, the Village of Corinth planning team members identified the following critical facilities (Table G-32) as assets that are considered the most important to the planning area. These facilities are susceptible to a range of impacts caused by this hazard. Ice storm impacts to critical facilities are similar across the entire planning area and are listed in detail in the ice storm hazard profile (Section 13). The following critical facilities would be vulnerable to ice storm events in the Village of Corinth:

Table G-32. Critical Facilities at Risk

JURISDICTION	CRITICAL FACILITIES
Village of Corinth	2 Municipal Facilities, 3 Sewage and Water Facilities

The population over 65 in the Village of Corinth is estimated at 18.5 percent of the City’s total population and children under the age of 5 are estimated at 7.0 percent. The population with a disability is estimated at 16.5 percent of the City’s total population. An estimated 14.5 percent of the Village of Corinth’s population live below the poverty level and 2.3 percent of the populations speak a language other than English (Table G-33).

Table G-33. Populations at Greater Risk

JURISDICTION	65 AND OLDER	UNDER 5	WITH A DISABILITY	BELOW POVERTY LEVEL	LIMITED ENGLISH SPEAKING
Village of Corinth	476	181	424	373	58

Historic losses are reported on a county-wide basis. Please see Section 13 of this Plan for additional information on historical and annualized losses for the entire planning area.

ANNEX G: VILLAGE OF CORINTH

LANDSLIDE

The Village of Corinth has no known areas susceptible or prone to landslides (Section 14). The Village of Corinth has no known historical occurrences of landslides and does not anticipate any landslide events in the future. The municipality has determined that this hazard is not a threat to the community and therefore does not require further analysis.

ANNEX G: VILLAGE OF CORINTH

LIGHTNING

HAZARD DESCRIPTION, LOCATION, & EXTENT

The Saratoga County Hazard Mitigation Plan Update provides a hazard description, location and extent of the lightning hazard for each participating jurisdiction (Section 15). Lightning events are not confined to specific geographic boundaries and are considered similar for all participating jurisdictions throughout the planning area.

HISTORICAL OCCURRENCES

There have been no recorded lightning events in the Village of Corinth from January 1996 through June 2024. The NCEI is a national data source organized under the National Oceanic and Atmospheric Administration and considered a reliable resource for hazards. However, historical lightning events have only been reported as independent events to the NCEI in recent years and remain widely underreported. The flash density for the planning area along with input from local team members was utilized in evaluating the jurisdiction's risk. The flash density for the entire planning area indicates regular occurrences of lightning events that simply are not being reported.

PROBABILITY OF FUTURE EVENTS

Based on historical records and input from the planning team the probability of occurrence for future lightning events in the Village of Corinth is considered "Highly Likely," or an event probable in the next year. The planning team stated that lightning occurs regularly in the area.

VULNERABILITY AND IMPACT

The Village of Corinth planning team members identified the following critical facilities as assets that are considered the most important to the planning area. These facilities are susceptible to a range of impacts caused by lightning events. Lightning impacts to critical facilities are similar across the entire planning area and are listed in detail in the lightning hazard profile (Section 15).

Table G-34. Critical Facilities at Risk

JURISDICTION	CRITICAL FACILITIES
Village of Corinth	2 Municipal Facilities, 3 Sewage and Water Facilities

While all citizens are at risk to the impacts of lightning, forced relocation and disaster recovery drastically impacts low-income residents who lack the financial means to travel, afford a long-term stay away from home, and to rebuild or repair their homes. The population over 65 in the Village of Corinth is estimated at 18.5 percent of the City's total population and children under the age of 5 are estimated at 7.0 percent. The population with a disability is estimated at 16.5 percent of the City's total population. An estimated 14.5 percent of the Village of Corinth's population live below the poverty level and 2.3 percent of the populations speak a language other than English (Table G-35).

Table G-35. Populations at Greater Risk

JURISDICTION	65 AND OLDER	UNDER 5	WITH A DISABILITY	BELOW POVERTY LEVEL	LIMITED ENGLISH SPEAKING
Village of Corinth	476	181	424	373	58

ANNEX G: VILLAGE OF CORINTH

With no historical lightning events or losses, the impacts of lightning events can be considered “Limited” with injuries or illness treatable with first aid, critical facilities and services shut down for 24 hours or less, and less than 10 percent of property destroyed. Overall, the average losses anticipated for the Village of Corinth due to lightning are considered negligible.

ANNEX G: VILLAGE OF CORINTH

SNOW STORM

HAZARD DESCRIPTION, LOCATION, EXTENT, & HISTORICAL OCCURRENCES

The Saratoga County Hazard Mitigation Plan Update provides a hazard description, location, and extent of the snow storm hazard for each participating jurisdiction (Section 16). Snow storm events are not confined to specific geographic boundaries and are considered similar for all participating jurisdictions throughout the planning area. For the purposes of evaluating this hazard, the following NCEI reporting categories are included under snow storm: blizzard, heavy snow, and winter storm. Historical snow storm data for the County, including the Village of Corinth, are provided on a county-wide basis per the NCEI database. Therefore, all historical events are listed in Section 16 of the Plan Update.

PROBABILITY OF FUTURE EVENTS

According to historical records for the Saratoga County planning area, the Village of Corinth can expect to experience a snow storm event approximately 13 times each year. This frequency supports a “Highly Likely” probability of future events.

VULNERABILITY AND IMPACT

While the entirety of the Saratoga County planning area, including the Village of Corinth, is exposed to snow storm events, existing buildings, infrastructure, and critical facilities are not likely to sustain significant damage from these events. However, the Village of Corinth planning team members identified the following critical facilities (Table G-36) as assets that are considered the most important to the planning area. These facilities are susceptible to a range of impacts caused by this hazard. Snow storm impacts to critical facilities are similar across the entire planning area and are listed in detail in the snow storm hazard profile (Section 16). The following critical facilities would be vulnerable to snow storm events in the Village of Corinth:

Table G-36. Critical Facilities at Risk

JURISDICTION	CRITICAL FACILITIES
Village of Corinth	2 Municipal Facilities, 3 Sewage and Water Facilities

The population over 65 in the Village of Corinth is estimated at 18.5 percent of the City’s total population and children under the age of 5 are estimated at 7.0 percent. The population with a disability is estimated at 16.5 percent of the City’s total population. An estimated 14.5 percent of the Village of Corinth’s population live below the poverty level and 2.3 percent of the populations speak a language other than English (Table G-37).

Table G-37. Populations at Greater Risk

JURISDICTION	65 AND OLDER	UNDER 5	WITH A DISABILITY	BELOW POVERTY LEVEL	LIMITED ENGLISH SPEAKING
Village of Corinth	476	181	424	373	58

Historic losses are reported on a county-wide basis. Please see Section 16 of this Plan for additional information on historical and annualized losses for the entire planning area.

ANNEX G: VILLAGE OF CORINTH

TORNADO

HAZARD DESCRIPTION, LOCATION, & EXTENT

The Saratoga County Hazard Mitigation Plan Update provides a hazard description, location and extent of the tornado hazard for each participating jurisdiction (Section 17). The risk of a tornado is not confined to specific geographic boundaries and the risk of an event is considered similar for all participating jurisdictions throughout the planning area.

HISTORICAL OCCURRENCES

According to the National Centers for Environmental Information (NCEI) Storm Events database, from January 1974 through June 2024, no tornado events are known to have impacted the Village of Corinth. Based on the list of historical tornado events for the Village of Corinth, there have been no recorded events since the 2019 Plan.

PROBABILITY OF FUTURE EVENTS

Historical tornado events are often reported on a county-wide basis, particularly when multiple smaller jurisdictions are impacted. While some incidents may be reported at the local municipal level, county level events provide a more robust risk assessment for each participating jurisdiction due to their similar geographic locations. According to historical records for the Saratoga County planning area, the Village of Corinth can expect to experience a tornado event once every three to four years. This frequency supports a “Likely” probability of future events.

VULNERABILITY AND IMPACT

The Village of Corinth planning team members identified the following critical facilities as assets that are considered the most important to the planning area. These facilities are susceptible to a range of impacts caused by tornado events. Tornado impacts to critical facilities are similar across the entire planning area and are listed in detail in the tornado hazard profile (Section 17).

Table G-38. Critical Facilities at Risk

JURISDICTION	CRITICAL FACILITIES
Village of Corinth	2 Municipal Facilities, 3 Sewage and Water Facilities

According to the American Community Survey (ACS) five-year estimates for 2022, a total of 10 manufactured homes are located in the Village of Corinth (1 percent of total housing stock). In addition, 76 percent (approximately 938 structures) of the housing units were built before 1980. These structures would typically be built to lower or less stringent construction standards than newer construction and may be more susceptible to damage during tornado events.

Table G-39. Structures at Greater Risk

JURISDICTION	SFR STRUCTURES BUILT BEFORE 1980	MANUFACTURED HOMES
Village of Corinth	938	10

While all citizens are at risk to the impacts of a tornado event, forced relocation and disaster recovery drastically impacts low-income residents who lack the financial means to travel, afford a long-term stay away from home, and to rebuild or repair their homes. The population over 65 in the Village of Corinth is estimated at 18.5 percent of the City’s total population and children under the age of 5 are estimated at 7.0 percent. The population with a disability is estimated at 16.5

ANNEX G: VILLAGE OF CORINTH

percent of the City’s total population. An estimated 14.5 percent of the Village of Corinth’s population live below the poverty level and 2.3 percent of the populations speak a language other than English (Table G-40).

Table G-40. Populations at Greater Risk

JURISDICTION	65 AND OLDER	UNDER 5	WITH A DISABILITY	BELOW POVERTY LEVEL	LIMITED ENGLISH SPEAKING
Village of Corinth	476	181	424	373	58

The total annual loss estimate due to tornado events is \$0 (in 2024 dollars), having an approximate annual loss estimate of \$0. Based on historic damages and best available data the impact of a tornado event on the Village of Corinth would be considered “Limited,” with injuries and illness treatable with first aid, critical facilities and services shutdown for 24-hours or less and less than 10 percent of properties destroyed or with major damage.

Table G-41. Estimated Average Annual Losses

JURISDICTION	TOTAL PROPERTY & CROP LOSS	AVERAGE ANNUAL LOSS ESTIMATES
Village of Corinth	\$0	\$0

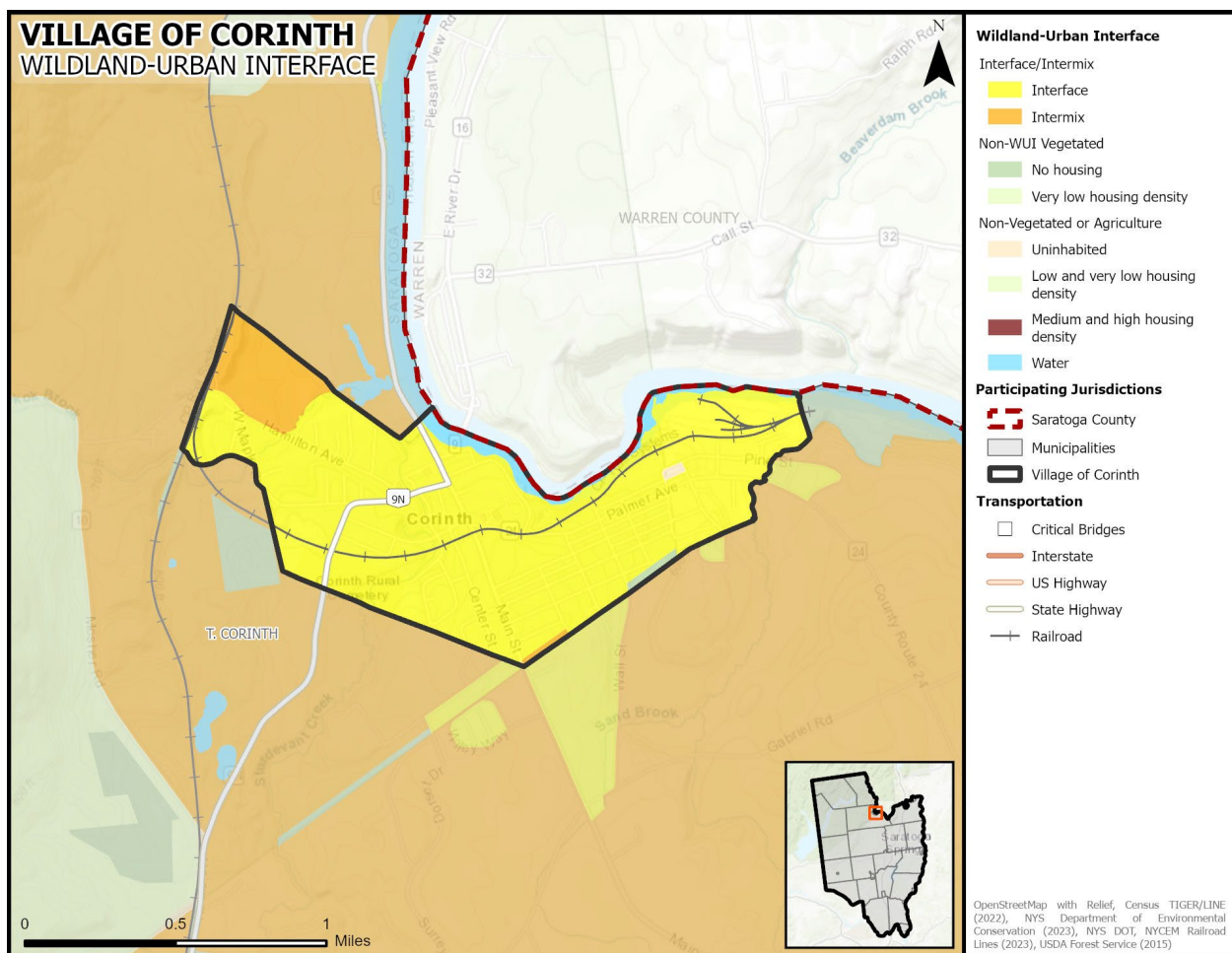
ANNEX G: VILLAGE OF CORINTH

WILDFIRE

HAZARD DESCRIPTION, & LOCATION

The Saratoga County Hazard Mitigation Plan Update provides a hazard description of the wildfire hazard for each participating jurisdiction (Section 18). A wildfire event can be a potentially damaging consequence of drought conditions, lightning, or wind event, if the conditions allow. Wildfires can vary greatly in terms of size, location, intensity, and duration. While wildfires are not confined to any specific geographic location, they are most likely to occur in open grasslands, highly vegetative areas, or along the forest floor, when conditions are favorable. The threat to people and property from a wildfire event is greater in the fringe areas where developed areas meet open grass lands, such as the Wildland Urban Interface (WUI). (Figure G-4). The Village of Corinth planning area is considered at low risk for wildfires with limited WUI areas.

Figure G-4. Village of Corinth Wildland Urban Interface Map



The New York State Department of Environmental Conservation (NYS DEC), Division of Forest Protection regularly identifies Fire Danger Rating Area (FDRA) Risk across the state. Reviewing a combination of temperature, wind, relative humidity, fuel and/or drought conditions, the Division of Forest Protection issues color coded danger alerts. The entire planning area, including the Village of Corinth, had a “Moderate” FDRA Risk rating as of October 2024 (Section 18, Figure 18-2).

ANNEX G: VILLAGE OF CORINTH

EXTENT

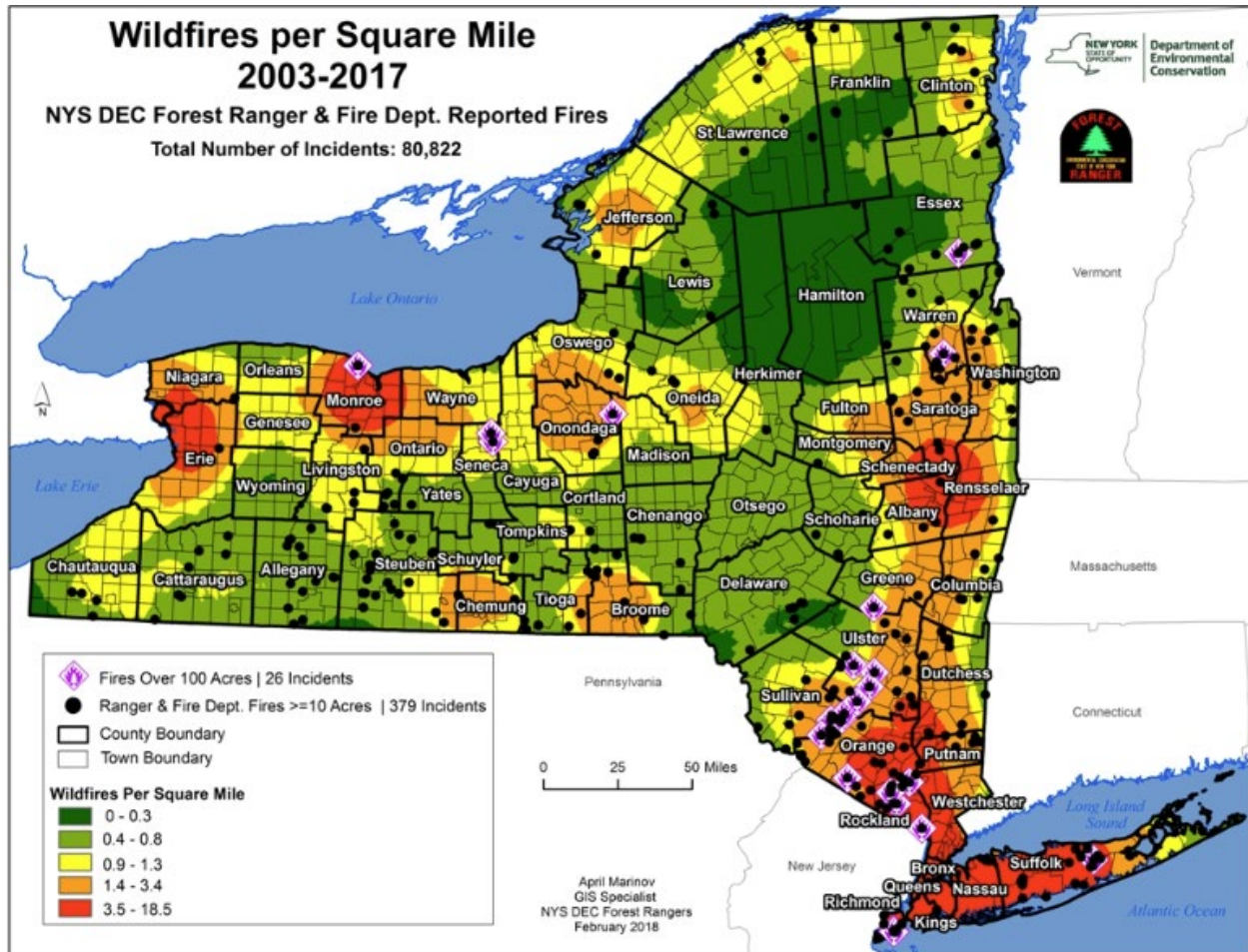
Risk for a wildfire event is measured in terms of magnitude and intensity using the Keetch Byram Drought Index (KBDI), a mathematical system for relating current and recent weather conditions to potential or expected fire behavior. The KBDI is available at the county level. The Saratoga County Hazard Mitigation Plan Update provides KBDI levels and descriptions along with the range of historical KBDI levels for the planning area (Section 18).

The average extent to be mitigated for the planning area is a KBDI of 300 to 400. At this level fires more readily burn and will carry across an area with no gaps. Heavier fuels will not readily ignite and burn. Expect smoldering and the resulting smoke to carry into and possibly through the night. Based on historical records and readily available fuel, the planning area can anticipate a KBDI range from 0 to 500. At the high end of this range fire intensity begins to significantly increase. Fires will readily burn in all directions exposing mineral soils in some locations. Larger fuels may burn or smolder for several days creating possible smoke and control problems.

The NYS DEC provides historical wildfire statistics from 2003 through 2017 (Figure G-5). Detailed data on historic wildfires in the planning area, including damages, acres burned, fatalities, or injuries, was not available. There were ten wildfires greater than 10 acres in Saratoga County during that same period, with the greatest wildfires per square mile occurring in the southern portions of the county. The Saratoga County planning area can anticipate limited future wildfire events, typically burning less than 10 acres with infrequent events exceeding 10 acres.

ANNEX G: VILLAGE OF CORINTH

Figure G-5. Wildfires per Square Mile, 2003-2017



HISTORICAL OCCURRENCES

Between 2008 and 2022 there were 62 wildfire events in Saratoga County. These incidents are reported county-wide. Most of the incidents were timber fires (48), followed by grass fires (8), brush (4), and slash (2). Based on data provided for historical wildfire events for Saratoga County planning area, 19 events have occurred since the 2019 Plan.

PROBABILITY OF FUTURE EVENTS

With 62 events in a 15-year period, a wildfire event within Saratoga County planning area, including Saratoga County, is “Highly Likely” meaning an event is probable within the next year.

VULNERABILITY AND IMPACT

The Village of Corinth planning team members identified the following critical facilities as assets that are considered the most important to the planning area. These facilities are susceptible to a range of impacts caused by wildfire events. Wildfire impacts to critical facilities are similar across the entire planning area and are listed in detail in the wildfire hazard profile (Section 18).

ANNEX G: VILLAGE OF CORINTH

Table G-42. Critical Facilities at Risk

JURISDICTION	CRITICAL FACILITIES
Village of Corinth	2 Municipal Facilities

For the Village of Corinth, the impact from a wildfire event can be considered “Limited,” meaning injuries and/or illnesses are treatable with first aid, complete shutdown of facilities and services for 24-hours or less and less than 10 percent of property is destroyed or with major damage. Severity of impact is gauged by acreage burned, homes and structures lost, injuries and fatalities.

ANNEX G: VILLAGE OF CORINTH

WIND

HAZARD DESCRIPTION, LOCATION, & EXTENT

The Saratoga County Hazard Mitigation Plan Update provides a hazard description, location and extent of the wind hazard for each participating jurisdiction (Section 19). Wind events are not confined to specific geographic boundaries and are considered similar for all participating jurisdictions throughout the planning area.

HISTORICAL OCCURRENCES

Since 1960, 24 wind events are known to have occurred in the Village of Corinth. Table G-43 presents information on known historical events impacting the Village of Corinth.

Table G-43. Historical Wind Events, 1960-2024¹⁰

JURISDICTION	DATE	TIME	MAGNITUDE (knots)	DEATHS	INJURIES	PROPERTY DAMAGE	CROP DAMAGE
Village of Corinth	7/4/1983	1345	0	0	0	0	0
	7/12/1987	1120	0	0	0	0	0
	7/26/1987	1548	0	0	0	0	0
	8/14/1988	1810	0	0	0	0	0
	6/27/1989	2130	0	0	0	0	0
	8/13/1990	1600	0	0	0	0	0
	6/12/1996	1915	-	0	0	\$7,900	0
	7/15/1997	1412	-	0	0	\$7,700	0
	8/5/2012	1850	50	0	0	0	0
	7/8/2014	2006	50	0	0	0	0
	7/8/2014	2000	50	0	0	0	0
	4/7/2016	1526	50	0	0	0	0
	7/1/2017	1347	50	0	0	0	0
	5/19/2019	1714	50	0	0	0	0
	7/30/2019	1646	50	0	0	0	0
	8/17/2019	1620	50	0	0	0	0
	8/17/2019	1619	50	0	0	0	0
	5/15/2020	1659	50	0	0	0	0
	5/29/2020	1652	50	0	0	0	0
	6/21/2021	1950	50	0	0	0	0
	6/21/2021	1952	50	0	0	0	0
	7/20/2021	1925	50	0	0	0	0

¹⁰ Historical events are reported from 1960 through 2024. Magnitude is listed when available. Damage values are in 2024 dollars.

ANNEX G: VILLAGE OF CORINTH

JURISDICTION	DATE	TIME	MAGNITUDE (knots)	DEATHS	INJURIES	PROPERTY DAMAGE	CROP DAMAGE
	9/8/2021	1722	50	0	0	0	0
	7/12/2022	1300	50	0	0	0	0
	6/20/2024	1600	55	0	0	0	0
TOTALS			(MAX EXTENT)	0	0	\$15,600	\$0

Based on the list of historical wind events for the Village of Corinth, 12 of the reported events have occurred since the 2019 Plan.

PROBABILITY OF FUTURE EVENTS

Historical wind events are typically reported on a county-wide basis. While some incidents may be reported at the local municipal level, as indicated above, county level events provide a more robust risk assessment for each participating jurisdiction. According to historical records for the Saratoga County planning area, the Village of Corinth can expect to experience a wind event every year. This frequency supports a “Highly Likely” probability of future events.

VULNERABILITY AND IMPACT

The Village of Corinth planning team members identified the following critical facilities as assets that are considered the most important to the planning area. These facilities are susceptible to a range of impacts caused by wind events. Wind impacts to critical facilities are similar across the entire planning area and are listed in detail in the wind hazard profile (Section 19).

Table G-44. Critical Facilities at Risk

JURISDICTION	CRITICAL FACILITIES
Village of Corinth	2 Municipal Facilities, 3 Sewage and Water Facilities

According to the American Community Survey (ACS) five-year estimates for 2022, a total of 10 manufactured homes are located in the Village of Corinth (1 percent of total housing stock). In addition, 76 percent (approximately 938 structures) of the housing units were built before 1980. These structures would typically be built to lower or less stringent construction standards than newer construction and may be more susceptible to damage during significant wind events.

Table G-45. Structures at Greater Risk

JURISDICTION	SFR STRUCTURES BUILT BEFORE 1980	MANUFACTURED HOMES
Village of Corinth	938	10

While all citizens are vulnerable to the impacts of wind events, forced relocation and disaster recovery drastically impacts low-income residents who lack the financial means to travel, afford a long-term stay away from home, and to rebuild or repair their homes. The population over 65 in the Village of Corinth is estimated at 18.5 percent of the City’s total population and children under the age of 5 are estimated at 7.0 percent. The population with a disability is estimated at 16.5 percent of the City’s total population. An estimated 14.5 percent of the Village of Corinth’s population live below the poverty level and 2.3 percent of the populations speak a language other than English (Table G-46).

ANNEX G: VILLAGE OF CORINTH

Table G-46. Populations at Greater Risk

JURISDICTION	65 AND OLDER	UNDER 5	WITH A DISABILITY	BELOW POVERTY LEVEL	LIMITED ENGLISH SPEAKING
Village of Corinth	476	181	424	373	58

Structural impact of wind events experienced in the Village of Corinth would be considered “Limited,” with injuries or illness treatable with first aid, less than 10 percent of property destroyed and critical facilities shut down for less than 24-hours. Over the 64.5-year reporting period there has been a total of \$15,600 damages (in 2024 dollars) in the Village of Corinth due to wind events. The estimated average annual loss from a wind event is \$200.

Table G-47. Estimated Annualized Losses

JURISDICTION	TOTAL PROPERTY & CROP LOSS	ANNUAL LOSS ESTIMATES
Village of Corinth	\$15,600	\$200

ANNEX G: VILLAGE OF CORINTH

CLIMATE CHANGE CONSIDERATIONS

The Saratoga County Hazard Mitigation Plan Update provides climate change considerations for all natural hazards for the entire planning area as climate change impacts are considered similar across all participating jurisdictions in Saratoga County unless otherwise stated. Please see Sections 5 through 19 of this Plan Update for additional information on climate change considerations by hazard.

HUMAN-CAUSED HAZARDS

The Saratoga County Hazard Mitigation Plan update provides a detailed hazard profile for the human-caused hazard invasive species. Information for this hazard is limited and typically reported at the county level. As such, the evaluation of human-caused hazards is considered similar for all jurisdictions in the Saratoga County planning area. Please see Section 20 of this Plan Update for additional information on the human-caused hazard evaluated for this plan.

ANNEX G: VILLAGE OF CORINTH

PREVIOUS MITIGATION ACTIONS

VILLAGE OF CORINTH PREVIOUS ACTIONS											
Initiative	Mitigation Initiative	Applies to New and/or Existing Structures	Hazards Mitigated	Goals Met	Objectives Met	Lead	Support	Estimated Cost	Sources of Funding	Timeline	2025 Analysis
VCR-1a	Where appropriate, support retrofitting of structures located in hazard-prone areas to protect structures from future damage, with repetitive loss and severe repetitive loss properties as priority. Identify facilities that are viable candidates for retrofitting based on cost-effectiveness versus relocation. Where retrofitting is determined to be a viable option, consider implementation of that action based on available funding. The Indeck Corinth Energy Center is located in a special flood hazard area; its vulnerability to flood hazards is not fully known and over the life of this plan the village will conduct an assessment of this facility (e.g., document history of damage) to understand its vulnerabilities and mitigate.	Existing	Flood, Severe Storm	1, 2, 3, 5	1-1, 1-2, 1-3, 2-2, 2-3, 2-4, 3-1, 3-5	NFIP Floodplain Administrator	NYS DHSES, FEMA	High	FEMA Mitigation Grant Programs and local budget (or property owner) for cost share	DOF	Defer to plan update.
VCR-1b	Where appropriate, support purchase, or relocation of structures located in hazard-prone areas to protect structures from future damage, with repetitive loss and severe repetitive loss properties as priority. Identify facilities that are viable candidates for relocation based on cost effectiveness versus retrofitting. Where relocation is determined to be a viable option, consider	New & Existing	Flood, Severe Storm	1, 2, 3, 5	1-1, 1-2, 1-3, 2-2, 2-3, 2-4, 3-1, 3-5	NFIP Floodplain Administrator	NYS DHSES, FEMA	High	FEMA Mitigation Grant Programs and local budget (or property owner) for cost share	Long term DOF	Defer to plan update.

ANNEX G: VILLAGE OF CORINTH

VILLAGE OF CORINTH PREVIOUS ACTIONS											
Initiative	Mitigation Initiative	Applies to New and/or Existing Structures	Hazards Mitigated	Goals Met	Objectives Met	Lead	Support	Estimated Cost	Sources of Funding	Timeline	2025 Analysis
	implementation of that action based on available funding. The Indeck Corinth Energy Center is located in a special flood hazard area; its vulnerability to flood hazards is not fully known and over the life of this plan the village will conduct an assessment of this facility (e.g., document history of damage) to understand its vulnerabilities and mitigate.										
VCR-2	Consider participation in incentive-based programs such as CRS.	New & Existing	Flood	1, 2, 5	1-1, 1-3, 1-6, 2-1, 2-2, 2-3, 2-4, 5-2	NFIP Floodplain Administrator	NYS DHSES, ISO, FEMA	Low - Medium	Local Budget	DOF	Defer to plan update.
VCR-3	Continue to support the implementation, monitoring, maintenance, and updating of this Plan, as defined in Section 7.0.	New & Existing	All Hazards	All	All	NFIP Floodplain Administrator	County (through Mitigation Planning Coordinator), NYS DHSES	Low – High (for 5-year update)	Local Budget, possibly FEMA Mitigation Grant Funding for 5-year update	DOF	Defer to plan update.
VCR-4	Strive to maintain compliance with, and good-standing in the National Flood Insurance program.	New & Existing	Flood	1, 2, 4	1-1, 1-2, 1-3, 1-8, 2-2, 2-3, 2-4, 4-1, 4-2, 4-3, 4-4	NFIP Floodplain Administrator	NYS DHSES, ISO, FEMA	Low - Medium	Local Budget	DOF	Defer to plan update.
VCR-5	Continue to develop, enhance, and implement existing emergency plans.	New & Existing	All Hazards	1, 3	1-1, 1-7, 3-2, 3-4, 3-5	Emergency Management with support from County OEM and NYS DHSES	County Emergency Management, NYS DHSES	Low - Medium	Local Budget	DOF	Defer to plan update.
VCR-6	Create/enhance/ maintain mutual aid agreements with neighboring communities.	New & Existing	All Hazards	3, 5	5 3-4, 5-1, 5-3	Emergency Management, DPW and Roads	Surrounding municipalities and County	Low - Medium	Local Budget	Ongoing	Defer to plan update.
VCR-7	Support County-wide initiatives identified in Section 9.1 of the County Annex.	New & Existing	All Hazards	All	All	Appropriate Departments	County and Regional agencies (as	Low - High	Existing programs and grant funding	DOF	Defer to plan update.

ANNEX G: VILLAGE OF CORINTH

VILLAGE OF CORINTH PREVIOUS ACTIONS											
Initiative	Mitigation Initiative	Applies to New and/or Existing Structures	Hazards Mitigated	Goals Met	Objectives Met	Lead	Support	Estimated Cost	Sources of Funding	Timeline	2025 Analysis
							appropriate for initiative)		where applicable		
VCR-8	Create/update the Emergency Action Plans for all dams located within the municipality.	Existing	Flood	1, 3	1-1, 1-6, 1-7, 3-1, 3-2, 3-4	NFIP Floodplain Administrator	Watershed districts (if applicable); neighboring municipalities; County (if applicable); NYS	Medium to low	FEMA HMA	DOF	Delete Action. Jurisdiction is not profiling dam failure in Plan Update.
VCR-9	Implement dam structure repairs as required by dam safety report/protocols.	Existing	Flood	3	3-1, 3-3, 3-6	NFIP Floodplain Administrator; Engineering Department	Watershed districts (if applicable); neighboring municipalities; County (if applicable); NYS	Medium	FEMA HMA	DOF	Delete Action. Jurisdiction is not profiling dam failure in Plan Update.
VCR-10	Support the Installation/Implementation of Community Emergency Alert System which will not only alert residents of a dam breach but of other hazard events as well.	New & Existing	All Hazards	1, 3, 5	1-1, 3-1, 3-3, 3-5, 3-6, 5-1	LEMC	Watershed districts (if applicable); neighboring municipalities; County (if applicable); NYS	Medium	FEMA HMA	Ongoing	Defer to plan update.
VCR-11	Create a mitigation support fund to provide matching funds on an ongoing basis for municipality and residential mitigation projects which will fund cost sharing portions of projects and be replenished during the annual budget cycle.	New & Existing	All Hazards	1, 2, 3, 5	1-3, 1-9, 2-5, 3-1, 5-2	Village Board	Not Provided	Medium	Operating Budget	Ongoing	Defer to plan update.
VCR-12	Purchase back-up generator for schools (our shelters) to ensure continuity during emergencies.	Existing	All Hazards	1, 3, 5	1-1, 3-4, 5-1	School Board	Schools	Low	FEMA EMPG	Ongoing – Long term depending on initiative	Defer to plan update.
VCR-13	Evaluate sheltering needs.	Existing	All Hazards	3	3-3, 3-4, 3-6	Office of Emergency Management	Not Provided	Low	Local	Short	Defer to plan update.

ANNEX G: VILLAGE OF CORINTH

NEW MITIGATION ACTIONS

VILLAGE OF CORINTH MITIGATION ACTIONS

*Projects related to Critical Facilities (CF) will protect the facility to the 500-year event or worst damage scenario, whichever is greater.

Project #	Goal / Objective being Met	Hazard to be Mitigated	Project Name and Description of the Problem	Description of the Solution	CF?*	EHP Issues	Estimated Timeline	Lead Agency	Estimated Costs	Estimated Benefits	Potential Funding Sources	Priority	Community Lifeline	Action Type
1	1.1 1.4 3.2	Flood, Hail, Hurricane/Tropical Storm, Ice Storm, Lightning, Snowstorm, Tornado, Wind	Retrofit RL/SRL Structures: Structures located in known hazard-prone areas are subject to repetitive damage. This project protects infrastructure, reduces cost of reparation, and prevents injury to residents.	Where appropriate, support retrofitting of structures located in hazard-prone areas to protect structures from future damage, with repetitive loss and severe repetitive loss properties as priority. Identify facilities that are viable candidates for retrofitting based on cost- effectiveness versus relocation. Where retrofitting is determined to be a viable option, consider implementation of that action based on available funding. The Indeck Corinth Energy Center is located in a special flood hazard area; its vulnerability to flood hazards is not fully known and over the life of this plan the village will conduct an assessment of this	Yes	Further review required	60 Months	NFIP Floodplain Administrator	\$1,000,000	Reduce the risk of damage and the loss of life.	Local Department Budget; HMGP, BRIC, CDBG, PA 406 (when applicable) local bonds	H	Safety/Security	Structure and Infrastructure

ANNEX G: VILLAGE OF CORINTH

VILLAGE OF CORINTH MITIGATION ACTIONS

*Projects related to Critical Facilities (CF) will protect the facility to the 500-year event or worst damage scenario, whichever is greater.

Project #	Goal / Objective being Met	Hazard to be Mitigated	Project Name and Description of the Problem	Description of the Solution	CF?*	EHP Issues	Estimated Timeline	Lead Agency	Estimated Costs	Estimated Benefits	Potential Funding Sources	Priority	Community Lifeline	Action Type
				facility (e.g., document history of damage) to understand its vulnerabilities and mitigate.										
2	1.1 1.4 3.2	Flood	Relocate Structures: Structures located in known hazard-prone areas are subject to repetitive damage. This project protects infrastructure, reduces cost of reparation, and prevents injury to residents.	Where appropriate, support purchase, or relocation of structures located in hazard-prone areas to protect structures from future damage, with repetitive loss and severe repetitive loss properties as priority. Identify facilities that are viable candidates for relocation based on cost-effectiveness versus retrofitting. Where relocation is determined to be a viable option, consider implementation of that action based on available funding. The Indeck Corinth Energy Center is located in a special flood hazard area; its vulnerability to flood hazards is not fully known and over the life	Yes	Further review required	60 Months	NFIP Floodplain Administrator	\$1,000,000	Reduce the risk of damage and loss of life.	Local Department Budget; HMGP, BRIC, CDBG, PA 406 (when applicable) local bonds	H	Safety/Security	Structure and Infrastructure

ANNEX G: VILLAGE OF CORINTH

VILLAGE OF CORINTH MITIGATION ACTIONS

*Projects related to Critical Facilities (CF) will protect the facility to the 500-year event or worst damage scenario, whichever is greater.

Project #	Goal / Objective being Met	Hazard to be Mitigated	Project Name and Description of the Problem	Description of the Solution	CF?*	EHP Issues	Estimated Timeline	Lead Agency	Estimated Costs	Estimated Benefits	Potential Funding Sources	Priority	Community Lifeline	Action Type
				of this plan the village will conduct an assessment of this facility (e.g., document history of damage) to understand its vulnerabilities and mitigate.										
3	1.4 2.3	Flood	Community Rating System: By exploring the CRS program, the County would potentially receive insurance premium rates that are discounted to reflect the reduced flood risk resulting from the community's efforts to reduce and avoid flood damage to insurable property, strengthen and support the insurance aspects of the National Flood Insurance Program and foster comprehensive floodplain management. This project promotes public safety.	Consider participation in incentive-based programs such as CRS.	Yes	N/A	36 Months	NFIP Floodplain Administrator	\$10,000	Reduce flood insurance premiums for local residents; Reduce flood risk and build resiliency.	Local Department Budget, Staff time	M	Safety/Security	Local Plans and Regulations
4	1.3	Drought, Earthquake, Extreme Cold, Extreme Heat, Flood, Hail, Hurricane/	Implementation, Monitoring, and Maintenance: There is a need to ensure a structured approach to guarantee that the Plan remains updated, effective, and aligned with	Continue to support the implementation, monitoring, maintenance, and updating of this Plan, as defined in Section 24.	No	N/A	12-60 Months	NFIP Floodplain Administrator	\$10,000	Ensure local hazard mitigation plan remains updated and effective; Ensure local jurisdictions remain aligned with the Plans goals and risk	Local Department Budget, Staff time	H	Safety/Security	Local Plans and Regulations

ANNEX G: VILLAGE OF CORINTH

VILLAGE OF CORINTH MITIGATION ACTIONS

*Projects related to Critical Facilities (CF) will protect the facility to the 500-year event or worst damage scenario, whichever is greater.

Project #	Goal / Objective being Met	Hazard to be Mitigated	Project Name and Description of the Problem	Description of the Solution	CF?*	EHP Issues	Estimated Timeline	Lead Agency	Estimated Costs	Estimated Benefits	Potential Funding Sources	Priority	Community Lifeline	Action Type
		Tropical Storm, Ice Storm, Landslide, Lightning, Snowstorm, Tornado, Wildfire, Wind, Invasive Species	its goals. This project promotes public safety.							reduction activities.				
5	1.4	Flood	NFIP Participation: Failure to adhere to NFIP requirements can result in loss of program benefits, increased flood risk, and financial burdens for residents. There is a need to ensure compliance with NFIP standards to protect the community and secure affordable flood insurance options. This project promotes public safety.	Strive to maintain compliance with, and good standing in the National Flood Insurance program.	Yes	N/A	60 Months	NFIP Floodplain Administrator	\$10,000	Reduce flood insurance premiums for local residents; Reduce flood risk and build resiliency.	Local Department Budget, Staff time	M	Safety/Security	Local Plans and Regulations
6	1.3	Drought, Earthquake, Extreme Cold, Extreme Heat, Flood, Hail, Hurricane/Tropical Storm, Ice Storm,	Develop, enhance, and implement: There is a need to ensure a structured approach to guarantee that the Plan remains updated, effective, and aligned with its goals. This project promotes public safety by addressing all hazards and being NIMS compliant	Continue to develop, enhance, and implement existing emergency plans.	No	N/A	12-60 Months	Emergency Management with support from County OEM and NYS DHSES	\$10,000	Ensure all plans are updated and aligned with one another; Ensure local jurisdictions remain aligned with the Plans goals and risk reduction activities.	Local Department Budget, Staff time	H	Safety/Security	Local Plans and Regulations

ANNEX G: VILLAGE OF CORINTH

VILLAGE OF CORINTH MITIGATION ACTIONS

*Projects related to Critical Facilities (CF) will protect the facility to the 500-year event or worst damage scenario, whichever is greater.

Project #	Goal / Objective being Met	Hazard to be Mitigated	Project Name and Description of the Problem	Description of the Solution	CF?*	EHP Issues	Estimated Timeline	Lead Agency	Estimated Costs	Estimated Benefits	Potential Funding Sources	Priority	Community Lifeline	Action Type
		Landslide, Lightning, Snowstorm, Tornado, Wildfire, Wind, Invasive Species	while working with the Emergency Operations Plan.											
7	5.1 5.2	Drought, Earthquake, Extreme Cold, Extreme Heat, Flood, Hail, Hurricane/Tropical Storm, Ice Storm, Landslide, Lightning, Snowstorm, Tornado, Wildfire, Wind, Invasive Species	Create, enhance, and maintain: Mutual aid agreements are crucial in disaster or emergency situations. Ensuring that mutual aid agreements are up to date will ensure that neighboring communities can help one another in a timely manner. This project promotes public safety.	Create/enhance/maintain mutual aid agreements with neighboring communities.	No	N/A	36-48 Months	Emergency Management, DPW and Roads	\$10,000	Ensure mutual aid agreements remain updated and effective; Ensure local jurisdictions remain aligned with one another and ready to assist when needed.	Local Department Budget, Staff time	H	Safety/Security	Preparedness
8	1.2 2.1	Drought, Earthquake, Extreme Cold, Extreme Heat, Flood, Hail, Hurricane/	Emergency Notification System: The general public may not have the means to access educational material or notification alerts. By establishing an area wide notification system	Support the Installation/Implementation of Community Emergency Alert System which will not only alert residents of a	No	N/A	24-36 Months	LEMC	\$100,000	Reduce risk to residents through improved communication and early warning.	Local Department Budget; HMGP, BRIC, CDBG, PA 406 (when	H	Communication Safety/Security	Education and Awareness

ANNEX G: VILLAGE OF CORINTH

VILLAGE OF CORINTH MITIGATION ACTIONS

*Projects related to Critical Facilities (CF) will protect the facility to the 500-year event or worst damage scenario, whichever is greater.

Project #	Goal / Objective being Met	Hazard to be Mitigated	Project Name and Description of the Problem	Description of the Solution	CF?*	EHP Issues	Estimated Timeline	Lead Agency	Estimated Costs	Estimated Benefits	Potential Funding Sources	Priority	Community Lifeline	Action Type
		Tropical Storm, Ice Storm, Landslide, Lightning, Snowstorm, Tornado, Wildfire, Wind, Invasive Species	ensures community members are aware of risk and able to prepare for the impact. This project promotes public safety.	dam breach but of other hazard events as well.							applicable) local bonds			
9	5.3 6.1	Drought, Earthquake, Extreme Cold, Extreme Heat, Flood, Hail, Hurricane/Tropical Storm, Ice Storm, Landslide, Lightning, Snowstorm, Tornado, Wildfire, Wind, Invasive Species	Public Awareness Program: The general public may not be aware of the risk of hazards that could impact the County. Creating a support fund could encourage community members to support mitigation projects and costs associated with them. This project promotes public safety.	Create a mitigation support fund to provide matching funds on an ongoing basis for municipality and residential mitigation projects which will fund cost sharing portions of projects and be replenished during the annual budget cycle.	No	N/A	60 Months	Village Board	\$10,000	Reduce the risk of damage and the loss of life.	Local Department Budget, Staff time	M	Safety/Security	Preparedness
10	1.1 3.3	Earthquake, Extreme Cold, Extreme	Generator for critical facilities: During power outages, critical facilities would be without lights,	Purchase back-up generator for schools (our shelters) to ensure	Yes	Further review required	24 Months	School Board	\$500,000	Provide power for critical facilities during power outages and ensure	Local Department Budget; HMGP,	M	Safety/Security Energy (Power/Fuel)	Structure and Infrastructure

ANNEX G: VILLAGE OF CORINTH

VILLAGE OF CORINTH MITIGATION ACTIONS

*Projects related to Critical Facilities (CF) will protect the facility to the 500-year event or worst damage scenario, whichever is greater.

Project #	Goal / Objective being Met	Hazard to be Mitigated	Project Name and Description of the Problem	Description of the Solution	CF?*	EHP Issues	Estimated Timeline	Lead Agency	Estimated Costs	Estimated Benefits	Potential Funding Sources	Priority	Community Lifeline	Action Type
		Heat, Flood, Hail, Hurricane/Tropical Storm, Ice Storm, Landslide, Lightning, Snowstorm, Tornado, Wildfire, Wind	communications, and maintenance equipment/machinery. The operations are basically brought to a halt. This project helps ensure critical facilities continue to provide services during a power outage caused by unforeseen events.	continuity during emergencies.						continuity of critical services.	BRIC, CDBG, PA 406 (when applicable) local bonds			
11	1.2 2.1 3.1 6.1	Earthquake Extreme Cold, Extreme Heat, Flood, Hail, Hurricane/ Tropical Storm, Ice Storm, Landslide, Lightning, Snowstorm, Tornado, Wildfire, Wind	Community Shelter: The community has no designated shelter for residents to evacuate. Considering potential site locations or construction, a community shelter will be needed to help reduce injuries or fatalities to at risk and vulnerable residents. This project promotes public safety.	Evaluate sheltering needs. Upon completing assessment, make necessary upgrades to retrofit current facilities.	No	Further review required	48-60 Months	Office of Emergency Management	\$100,000	Reduce risk to residents by providing shelter during extreme weather events.	Local Department Budget; HMGP, BRIC, CDBG, PA 406 (when applicable) local bonds	M	Safety/Security Food/Hydratio n/Shelter	Structure and Infrastructure

ANNEX G: VILLAGE OF CORINTH

CAPABILITY ASSESSMENT

COMMUNITY CAPABILITY CHECKLIST	VILLAGE OF CORINTH
PLANS	
Basic Plan/Floodplain Management Plan	X
Capital Improvements Plan	X
Climate Change Adaptation Plan	
Community Wildfire Protection Plan	
Comprehensive / Master Plan / Land Use Plan	X
Continuity of Operations Plan	
Drought Contingency Plan/Protocol on Water Restrictions	
Economic Development Plan	
Emergency Management/Response Action Plan	X
Emergency Operations Plan	
Evacuation Plan	
Extreme Heat Protocol	
Hazard Mitigation Plan	X
Open Space Plan	
Post Disaster Recovery Plan	
Shoreline Management Plan/Ordinance	
Stormwater Management Plan / Ordinance	
Transportation Plan	
POLICIES/ORDINANCES	
Building Codes	X
Fire Code	
Floodplain Ordinance	X
Manufactured Home Restrictions	
Post Disaster Recovery Ordinance	
Real Estate Disclosure Requirement	

ANNEX G: VILLAGE OF CORINTH

COMMUNITY CAPABILITY CHECKLIST	VILLAGE OF CORINTH
Site Plan Review Requirements	X
Stormwater Ordinance	
Subdivision Regulations	X
Wildfire Ordinance	
Zoning Ordinance/Land Use Restrictions	X
Other (Special Purpose Ordinance (i.e., critical or sensitive areas))	
PROGRAMS	
Firewise Communities	
Floodplain Maps/Flood Insurance Studies	X
Growth Management	
Hydrologic/Hydraulic Studies	
Mutual Aid Agreement	X
National Flood Insurance Program Participant	X
NFIP Community Rating System Participant	
Property Acquisition Program	
Public Education/Awareness Programs	
Storm Drainage Systems Maintenance Program	
Stream Maintenance Program	
StormReady Communities	
Warning Systems/Services (reverse 911, outdoor warning sirens)	X
STAFF / DEPARTMENTS	
Building Code Official	X
Emergency Manager	X
Engineers or Planners with Knowledge of Land Development and Land Management Practices	X
Engineers or Professionals Trained in Constructions Practices Related to Buildings and/or Infrastructure	
Environmental Conservation Specialist	
Floodplain Administrator	X
Geographic Information System (GIS) Coordinator	

ANNEX G: VILLAGE OF CORINTH

COMMUNITY CAPABILITY CHECKLIST	VILLAGE OF CORINTH
Personnel with Hazard Knowledge	
Planners	
Public Information Official	X
Resource Development/Grant Writer	
Surveyors	